

Revitalization with Re-use of Historic Structures



Stowe St. & Main St. in 1930's with Stimson-Graves Building on left - historic mixed use



Stowe St. & Main St. today with restored Stimson-Graves Bldg. with senior housing, Waterbury Senior Center, and retail space



Axel's Frame Shop and Gallery at the Stimson- Graves Building – renovated with a new sidewalk.



**Streetscape with wayfinding & amenities with
Stimson-Graves Bldg. – Senior Center on 1st floor**



**Village of Waterbury graded school circa 1900.
The building was moved from N. Main to Elm St.**



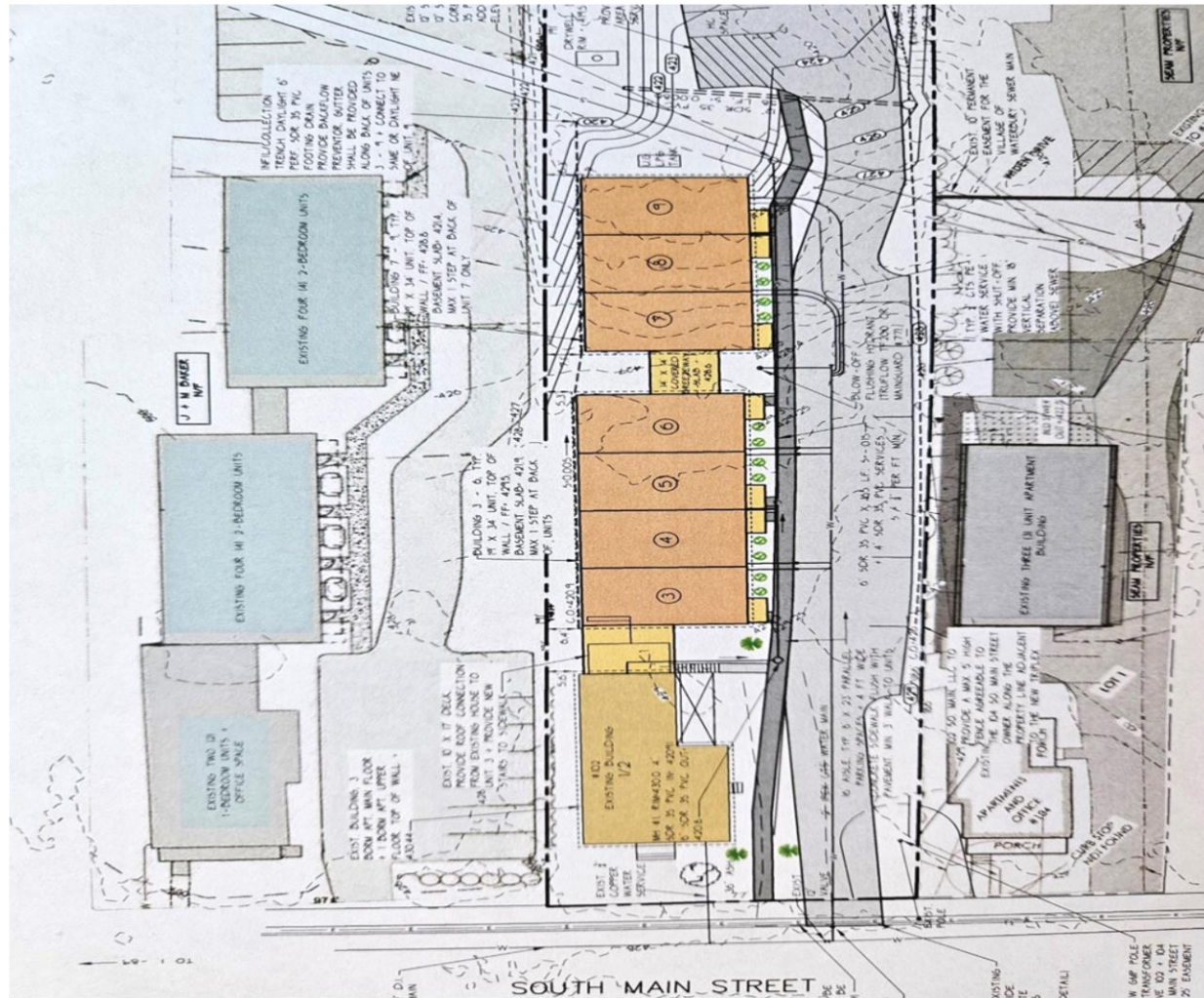
The building was flooded and severely damaged by Tropical Storm Irene then given a new life.



**This is the Prohibition Pig brew-pub on Elm St.
with outdoor dining on the sidewalk level.**



**South Main St. with 102 & 104 on the left and
St. Andrews Catholic Church on the right**



Site Plan for 102 S. Main St. with 100 & 104 S. Main on either side



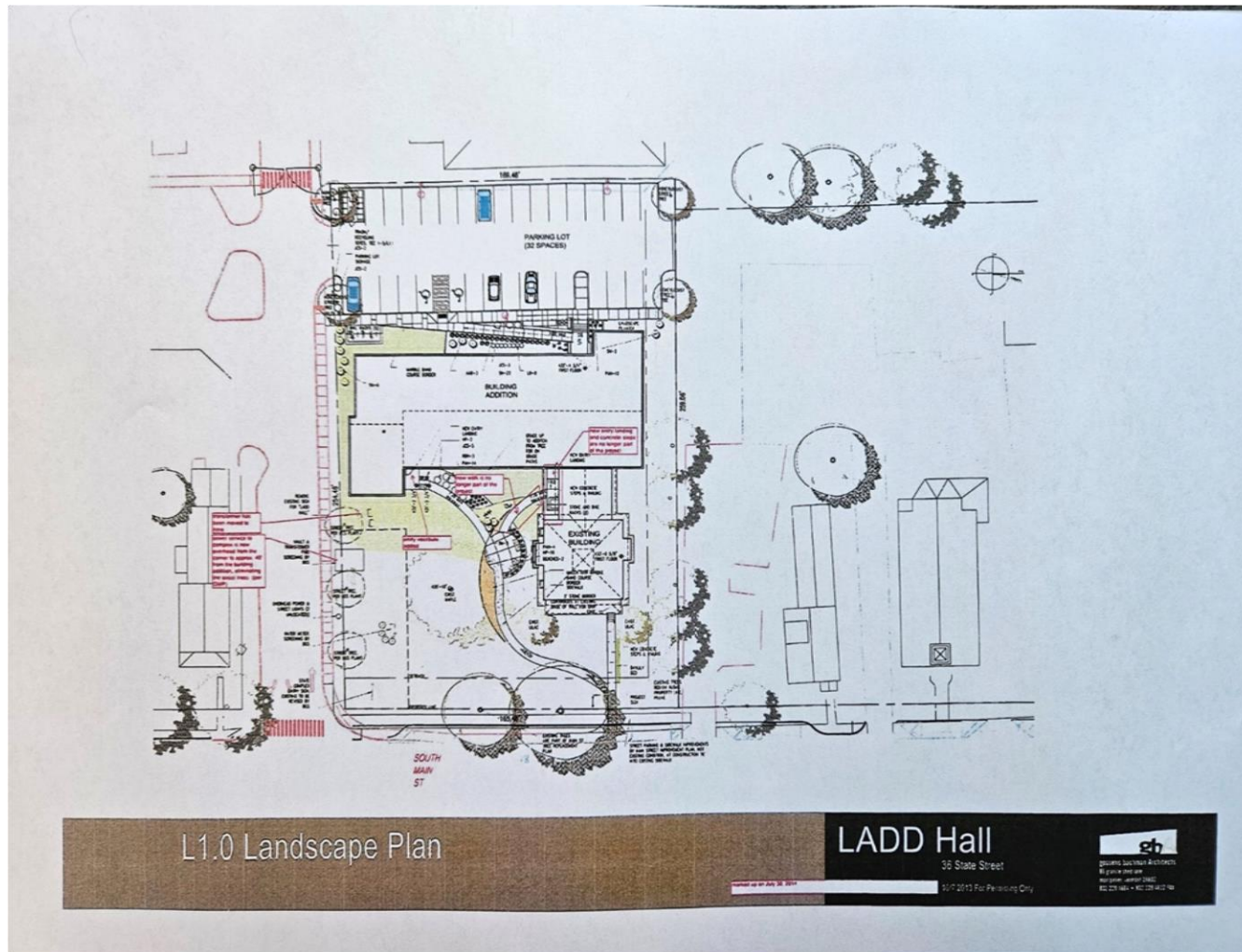
100 S. Main St. with eight-unit multi-family addition



102 S. Main St. with seven-unit multi-family addition under construction



104 S. Main St. with three-unit building that replaced a deteriorated carriage barn.



**Landscape Plan for Main St. Apartments
at former Ladd Hall site – 36 State Dr.**



Main St. Apartments developed, owned and managed by Downstreet Housing & Comm. Dev.



**The modern addition & historic house
have 27-units of affordable housing.**