



**STAYING  
CONNECTED  
INITIATIVE**

# Applying SCI's "Multi-pronged Approach" in Vermont

Jens Hilke: Conservation Planner. Vermont Fish & Wildlife Department



# VT Staying Connected

- Meet quarterly
- Two All-partner, statewide meetings / year
- Two place-based local partner meetings / year
- Field trips
- Coordinated by Vermont Fish & Wildlife Department
- 14 core partners and many affiliates



# VT Staying Connected Initiative



- ❑ Vermont Fish & Wildlife Department
- ❑ Vermont Agency of Transportation
- ❑ The Nature Conservancy
- ❑ Vermont Natural Resources Council
- ❑ Vermont Land Trust
- ❑ National Wildlife Federation
- ❑ Trust for Public Land
- ❑ Northeast Wilderness Trust
- ❑ U.S. Forest Service
- ❑ The Conservation Fund
- ❑ Vermont Department of Forests, Parks, & Recreation
- ❑ Department of Environmental Conservation



January 2019, "Intro to Staying Connected Initiative Field Trip"

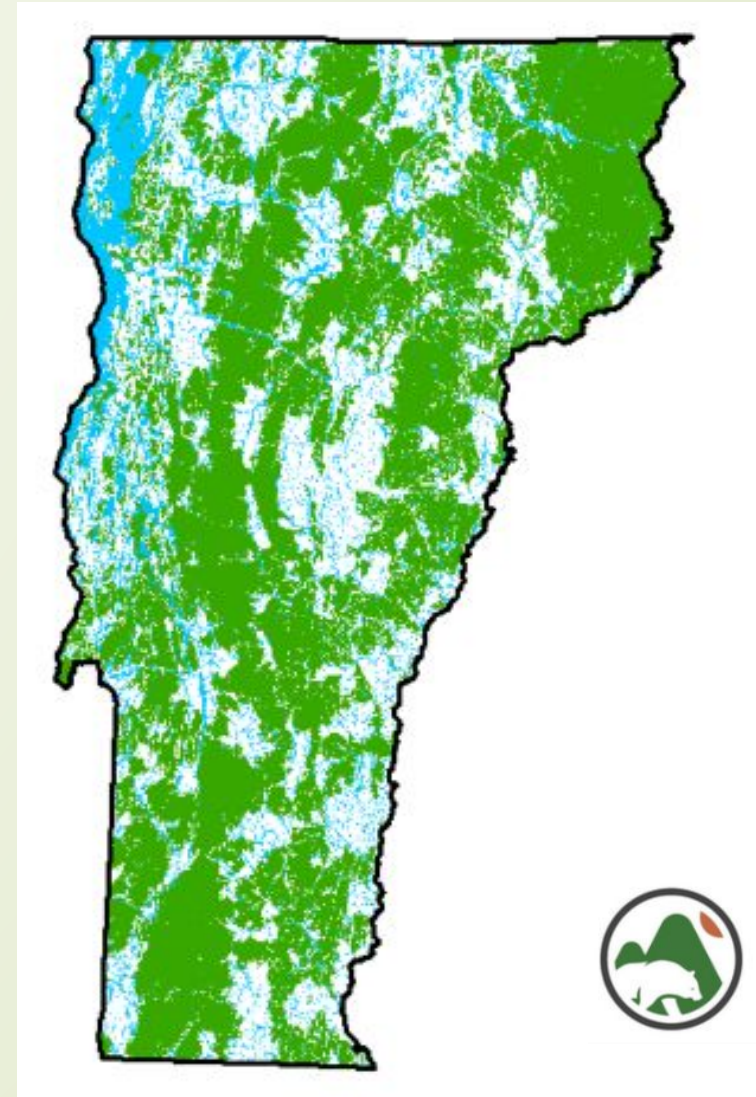


Highways & Habitats Trainings



# Conservation Science

- Nested Scales of Priority
- Different mix of partners at each
  - Statewide
  - Linkages
  - Sites

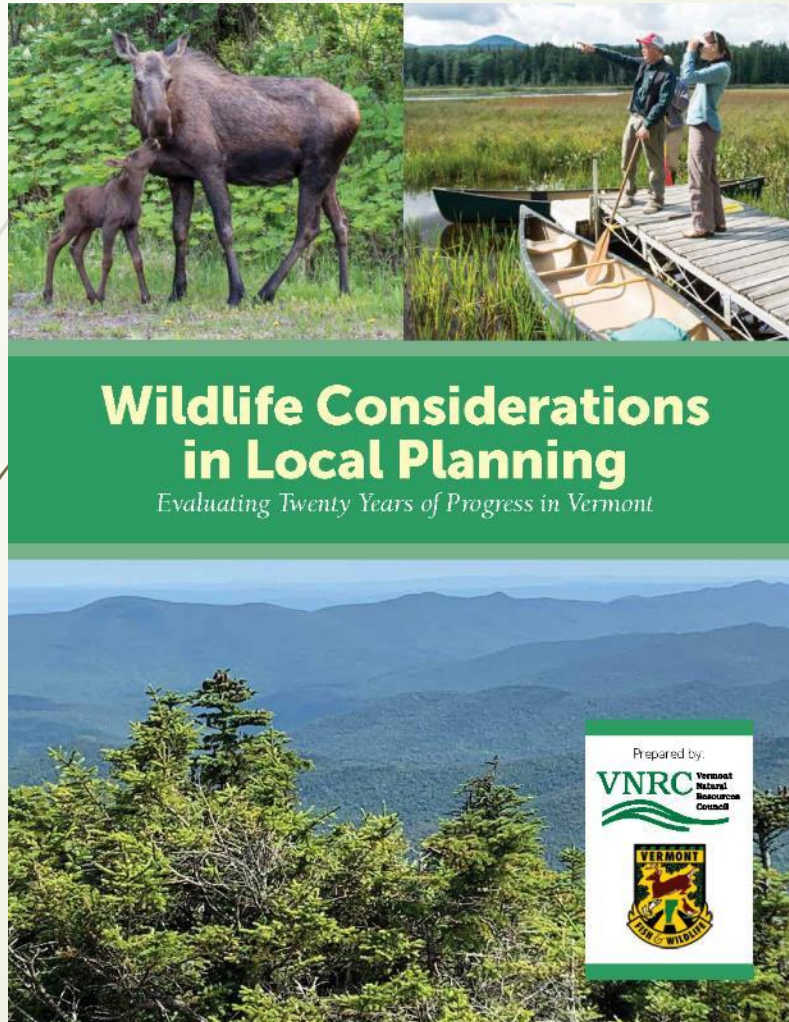


STATEWIDE  
VT Conservation  
Design



STAYING  
CONNECTED  
INITIATIVE

# Land use Planning



- ❑ Partnership between VNRC and Vermont Fish and Wildlife Dept.
- ❑ Comprehensive review of all town plans, zoning bylaws, and subdivision regulations in VT.
- ❑ Conducted every ten years.



# Forest Integrity Law

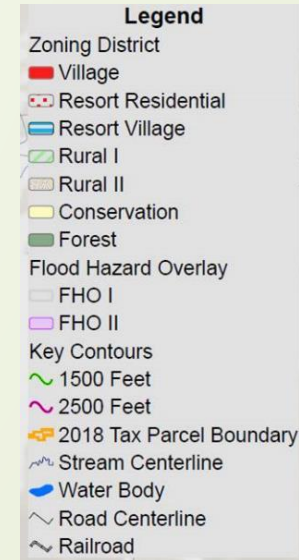
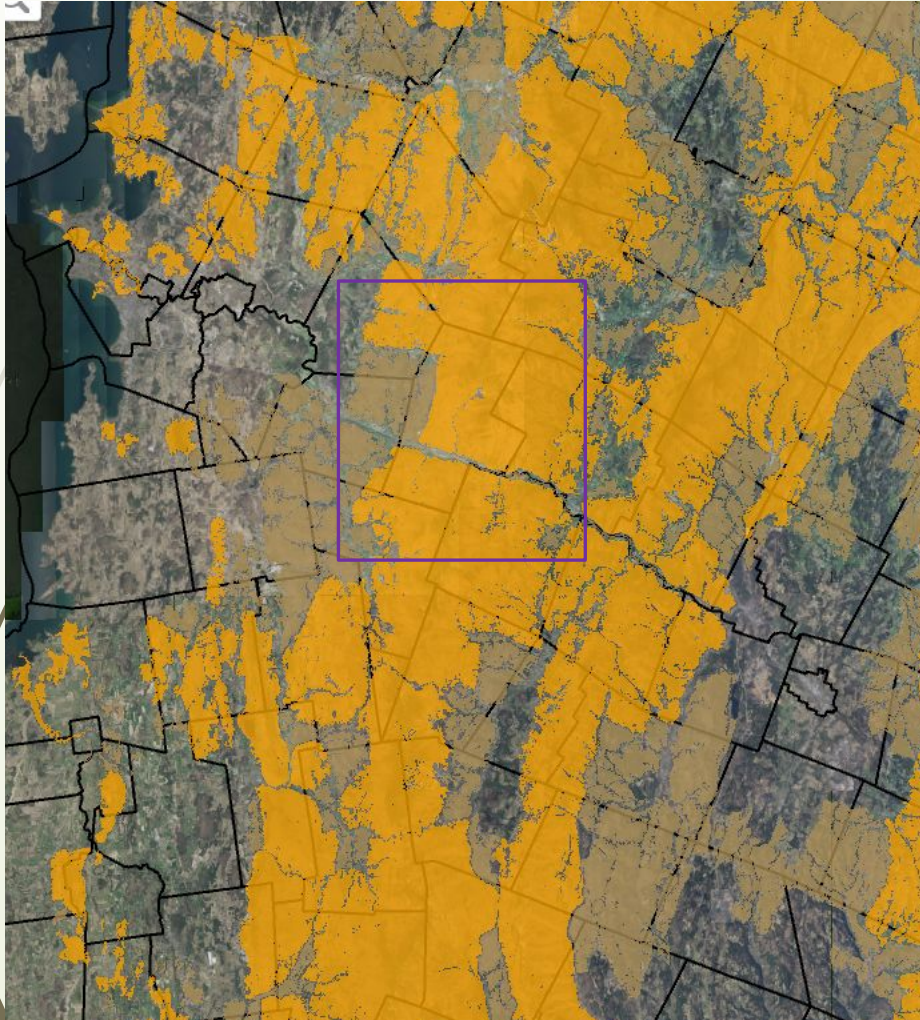


- Clarified definitions within 24 V.S.A. Chapter 117
  - Forest Block
  - Forest Fragmentation
  - Habitat Connector
- Updated **State** Planning Goals in 24 V.S.A. § 4302
  - New language on forest blocks/habitat connectors
- Updated statute on **Regional** Plans in 24 V.S.A. § 4348
  - New language on forest blocks/habitat connectors
- Clarified requirements for **Towns** that choose to plan in 24 V.S.A. § 4382
  - New language on forest blocks/habitat connectors

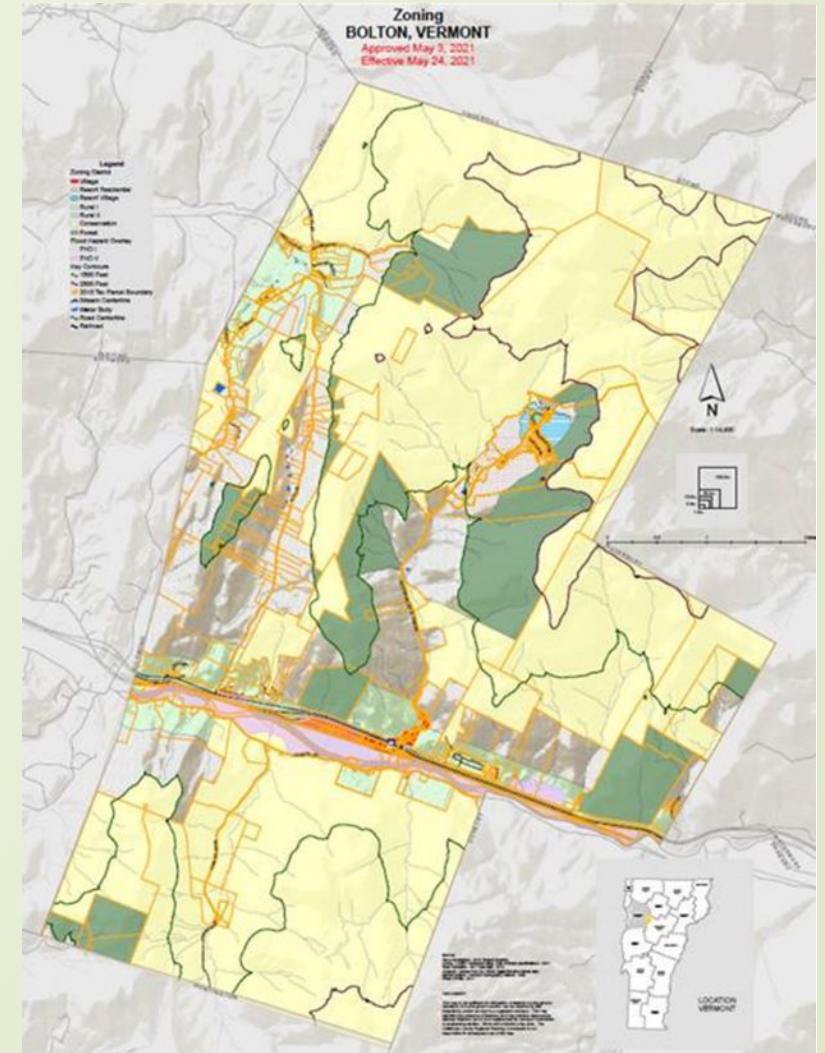


# Bolton's Zoning Rewrite 2018-2021

## Vermont Conservation Design - Connectivity



## New Zoning





# Coordinating Transportation investments and Land protection



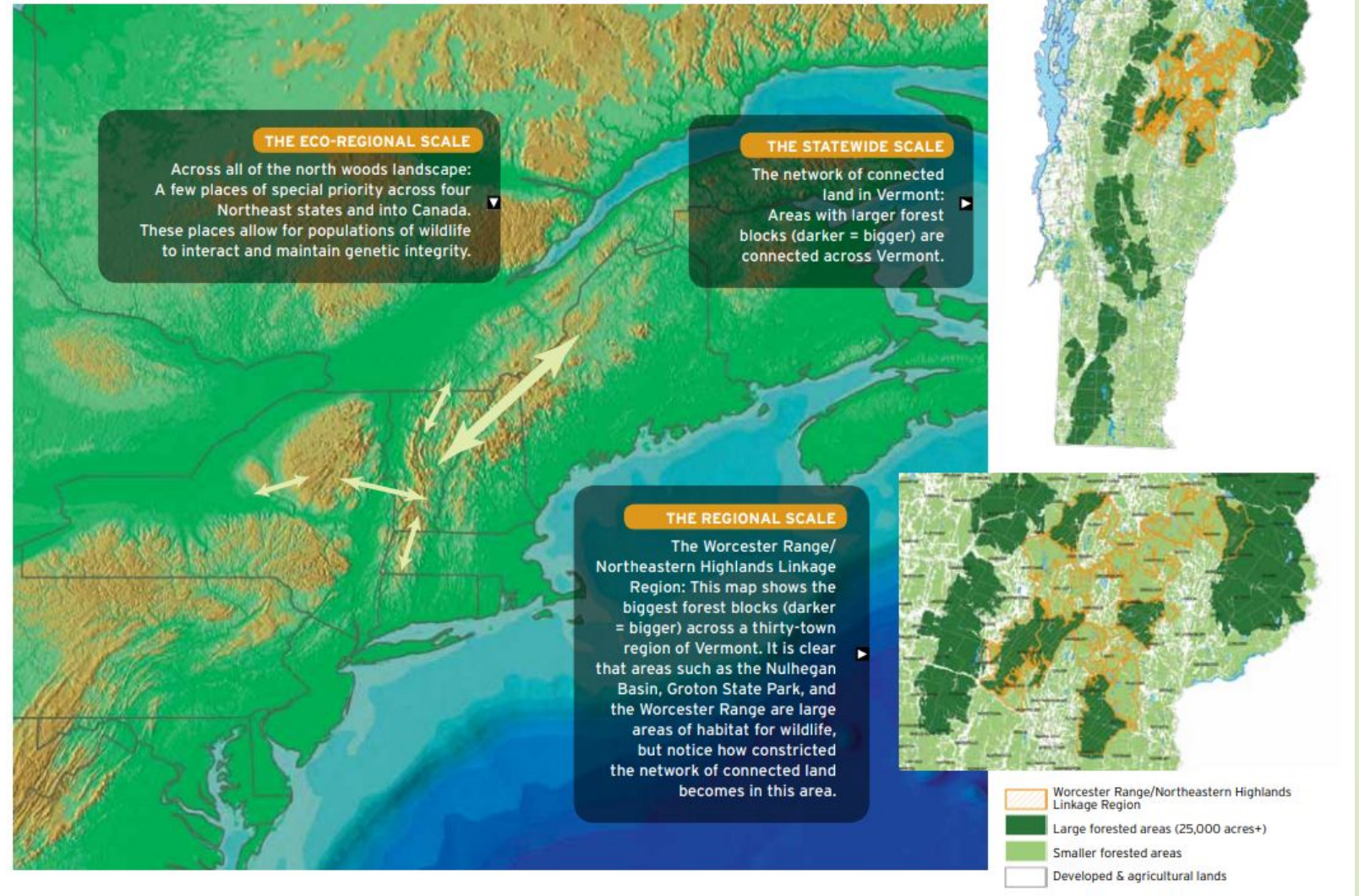
STAYING  
CONNECTED  
INITIATIVE





# Worcesters to Northeastern Highlands Linkage

## CONNECTIVITY at Three Scales

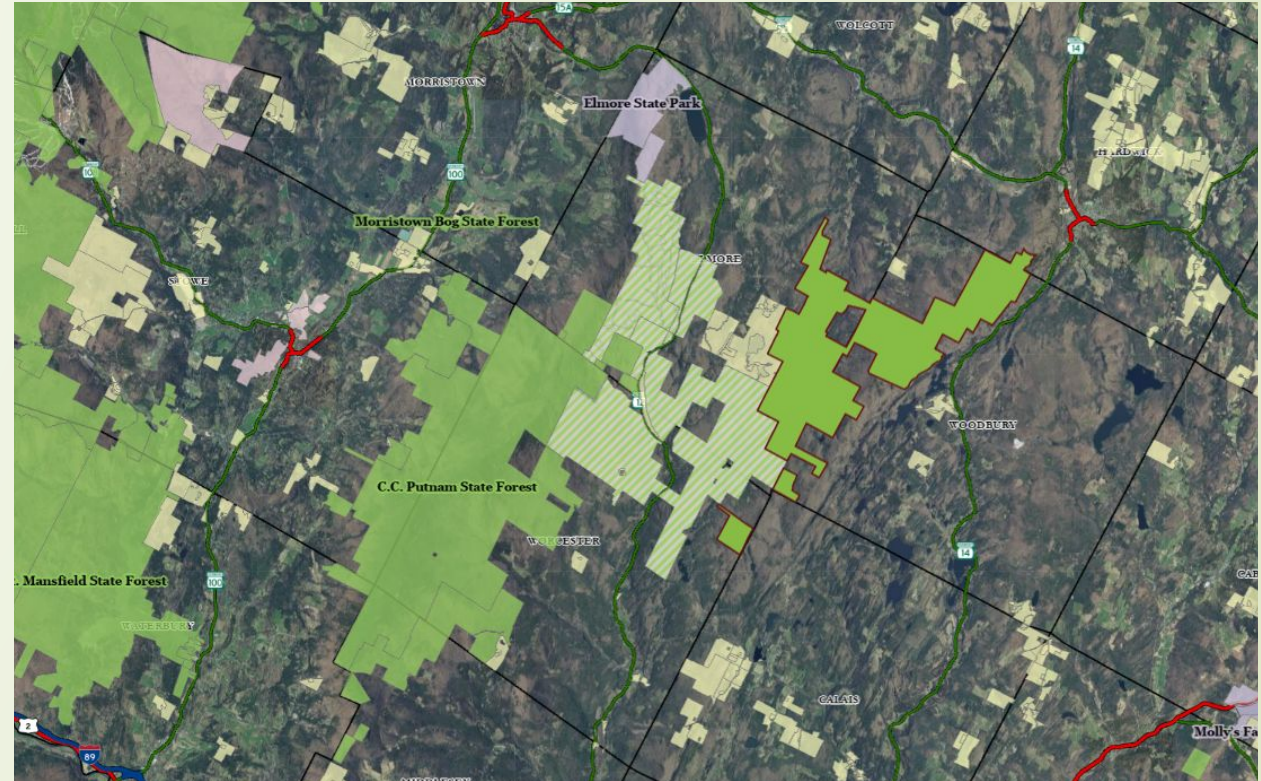




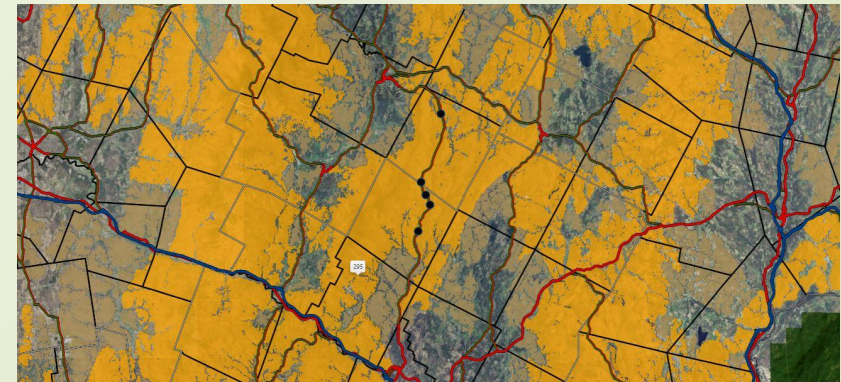
# Land Protection



## Conserved Land

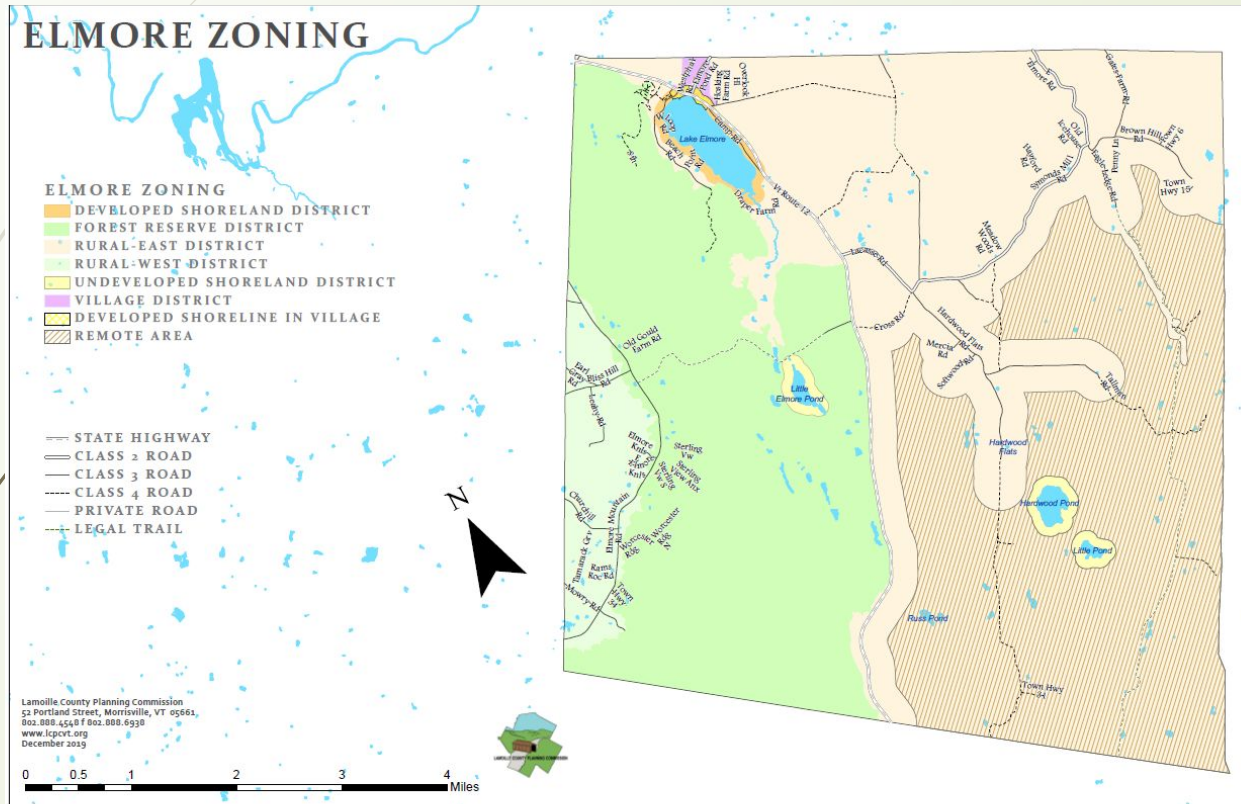


## Vermont Conservation Design - Connectivity



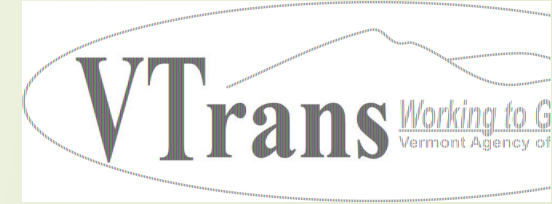


# Land Use Planning



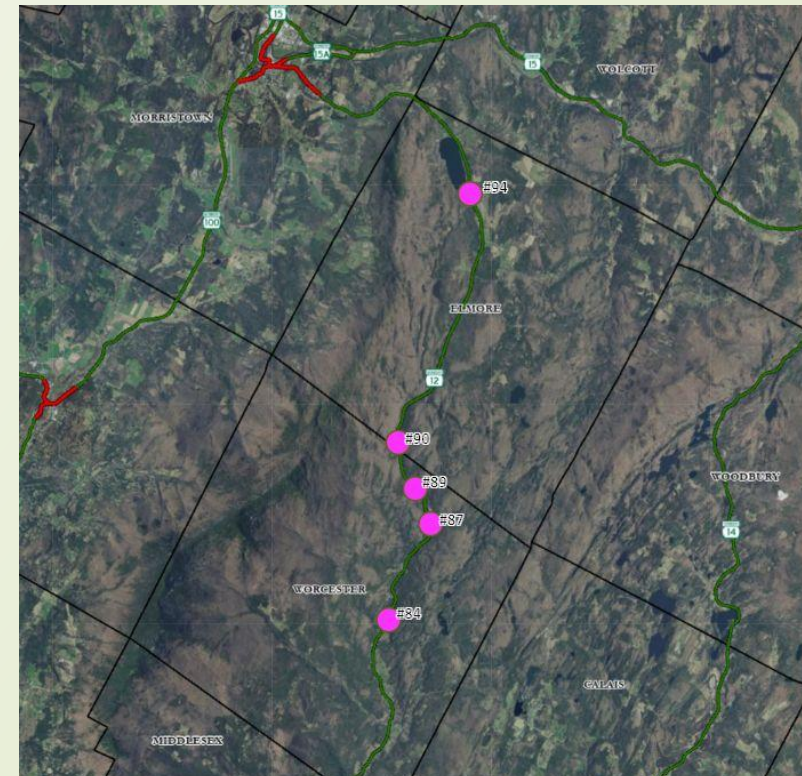
- Elmore's Town plan addresses forests and connectivity as important for the town
- Elmore has zoning and subdivision regulations that control where development happens (so it doesn't sprawl everywhere) and restrict wildlife movement.
- See Forest Reserve and "Remote Areas"

# Road Barrier Mitigation



Vermont Agency of Transportation will replace five bridges and culverts along Rt 12 in 2025. The new structures will greatly benefit wildlife passage!

- ❑ VT ROUTE 12 BRIDGE NO. 94
  - ❑ Current Structure: steel culvert 6' wide
  - ❑ Replacement Structure: 11-ft +- span box culvert
- ❑ VT ROUTE 12 BRIDGE NO. 90
  - ❑ Current Structure: steel culvert 6' wide
  - ❑ Replacement Structure: 80-ft +- span bridge
- ❑ VT ROUTE 12 BRIDGE NO. 89
  - ❑ Current Structure: steel culvert 15'
  - ❑ Replacement Structure: 45-ft +- span bridge
- ❑ VT ROUTE 12 BRIDGE NO. 87
  - ❑ Current Structure: steel culvert 14'
  - ❑ Replacement Structure: 20-ft +- precast box culvert
- ❑ VT ROUTE 12 BRIDGE NO. 84
  - ❑ Current Structure: steel bridge 82' span
  - ❑ Replacement Structure: 80-ft +- bridge





# A Public-Private Partnership

## □ Benefits to State Agencies

- Coordination between science, protection, land use & transportation
- Expands capacity of technical assistance & land protection
- Expands spectrum of activity (through multi-pronged approach)
- Provides eco-regional context
- Encourages local empowerment





Thank You!

Jens.Hilke@vermont.gov







**STAYING  
CONNECTED  
INITIATIVE**



Staying Connected Initiative  
All – Partner's Retreat 2018